

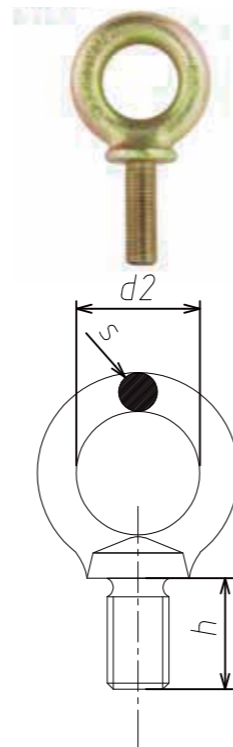
# Eye Bolt

## Eye Bolt

### 1. JIS 1168 Eye Bolt

Process: Forging  
Material: Carbon Steel  
Surface: Yellow Zinc Plating

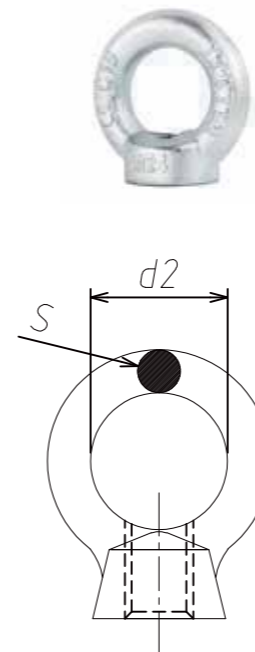
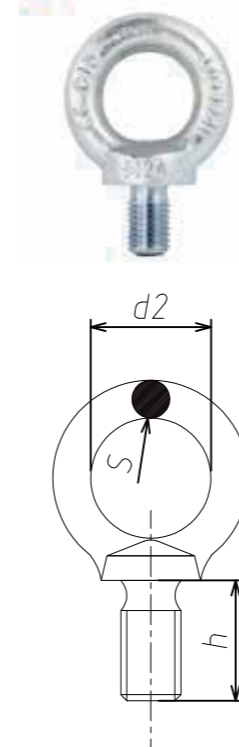
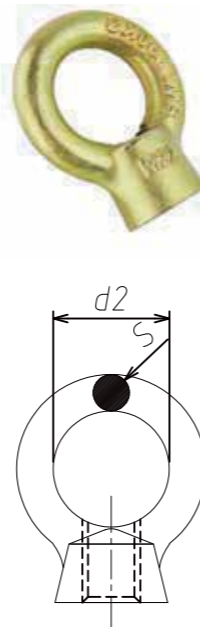
Part No	Size (mm)	WLL (T)	Weight (kg)	Dimensions (mm)		
				s	d2	h
TKR0519	M8	0.08	0.03	6.3	20	15
TKR0520	M10	0.15	0.06	8	25	18
TKR0521	M12	0.22	0.12	10	30	22
TKR0522	M16	0.45	0.22	12.5	35	27
TKR0523	M20	0.63	0.4	16	40	30
TKR0524	M24	0.95	0.8	20	50	38
TKR0525	M30	1.5	1.54	25	60	45
TKR0526	M36	2.3	2.83	31.5	70	55
TKR0527	M42	3.4	4.1	35.5	80	65
TKR0528	M48	4.5	5.88	40	90	70
TKR0529	M64	9	11.6	50	110	90



### 2. JIS 1169 Eye Nut

Process: Forging  
Material: Carbon Steel  
Surface: Yellow Zinc Plating

Part No	Size (mm)	WLL (kg)	Weight (kg)	Dimensions (mm)	
				d2	S
TKR0530	M8	0.08	0.026	20	6.3
TKR0531	M10	0.15	0.064	25	8
TKR0532	M12	0.22	0.125	30	10
TKR0533	M16	0.45	0.223	35	12.5
TKR0534	M20	0.63	0.39	40	16
TKR0535	M24	0.95	0.85	50	20
TKR0536	M30	1.5	1.75	60	25
TKR0537	M36	2.3	3	70	31.5
TKR0538	M42	3.4	4.65	80	35.5
TKR0539	M48	4.5	6.6	90	40
TKR0540	M64	9	13.8	110	50



### 3. DIN 580 Eye Bolt

Process: Forging  
Material: Carbon Steel  
Surface: Hot Dip Galvanized or Zinc Plating

Part No	Size (mm)	WLL (t)	Weight (kg)	Dimensions (mm)		
				d2	h	S
TKR0541	M6	0.14	0.050	16	13	6
TKR0542	M8	0.14	0.059	20	15	8
TKR0543	M10	0.23	0.109	25	18	10
TKR0544	M12	0.34	0.182	30	22	12
TKR0545	M14	0.49	0.286	35	28	14
TKR0546	M16	0.7	0.286	35	28	14
TKR0547	M20	1.2	0.449	40	30	16
TKR0548	M22	1.5	0.672	45	35	18
TKR0549	M24	1.8	0.872	50	38	20
TKR0550	M27	2.5	0.881	50	38	20
TKR0551	M30	3.6	1.662	60	45	24
TKR0552	M33	4.3	1.725	60	45	24
TKR0553	M36	5.1	2.656	70	55	28
TKR0554	M39	6.1	2.806	70	55	28
TKR0555	M42	7	4.036	80	65	32
TKR0556	M45	8	4.259	80	65	32
TKR0557	M48	8.6	6.392	90	70	38
TKR0558	M52	9.9	6.610	90	70	38
TKR0559	M56	11.5	6.774	100	80	42
TKR0560	M64	16	12.421	110	90	48

### 4. DIN 582 Eye Nut

Process: Forging  
Material: Carbon Steel  
Surface: Hot Dip Galvanized or Zinc Plating

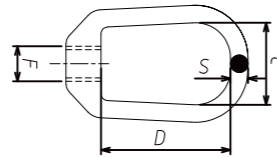
Part No	Size (mm)	WLL (t)	Weight (kg)	Dimensions (mm)	
				d2	s
TKR0561	M6	0.14	0.050	20	8
TKR0562	M8	0.14	0.050	20	8
TKR0563	M10	0.23	0.091	25	10
TKR0564	M12	0.34	0.159	30	12
TKR0565	M14	0.49	0.241	35	14
TKR0566	M16	0.7	0.241	35	14
TKR0567	M20	1.2	0.359	40	16
TKR0568	M22	1.5	0.581	45	18
TKR0569	M24	1.8	0.722	50	20
TKR0570	M27	2.5	0.699	50	20
TKR0571	M30	3.6	1.321	60	24
TKR0572	M33	4.3	1.303	60	24
TKR0573	M36	5.1	2.084	70	28
TKR0574	M39	6.1	2.025	70	28
TKR0575	M42	7	3.114	80	32
TKR0576	M45	8	3.046	80	32
TKR0577	M48	8.6	5.030	90	38
TKR0578	M52	9.9	4.958	90	38
TKR0579	M56	11.5	6.701	100	42
TKR0580	M64	16	9.316	110	48

# Eye Bolt

## Eye Bolt

### 5. G400 Eye Nut

Process: Forging  
Material: Carbon Steel  
Surface: Hot Dip Galvanized or Zinc Plating

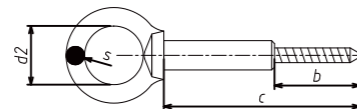


Part No	Size (in.)	W.L.L (lbs.)	Weight (lbs.)	Dimensions (in.)			
				C	D	F	S
TKR0582	1/4	520	0.09	0.75	1	0.5	0.31
TKR0583	3/8	1250	0.17	1	1.2	0.56	0.41
TKR0584	1/2	2250	0.28	1.25	1.44	0.81	0.50
TKR0585	5/8	3600	0.6	1.5	1.92	1	0.69
TKR0586	3/4	5200	1	1.75	2.38	1.12	0.84
TKR0587	7/8	7200	1.65	2	2.63	1.38	1
TKR0588	1	10000	2.69	2.25	3.06	1.56	1.19
TKR0589	1-1/4	15500	4.38	2.5	3.5	1.88	1.38
TKR0590	1-3/8	18500	5	2.75	4	2	1.5
TKR0591	1-1/2	22500	6.78	3.12	4.31	2.25	1.66
TKR0592	2	40000	14.6	4.1	6.20	3.13	1.94



### 6. G275 US Type Eye Screw Bolt

Process: Forging  
Material: Carbon Steel  
Surface: Hot Dip Galvanized or Zinc Plating

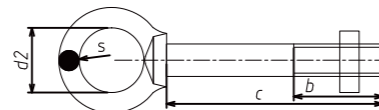


Part No	Size (in.)	Weight (lbs.)	Dimensions (in.)			
			d2	s	b	c
TKR0593	1/4	0.043	0.5	0.19	1.5	2
TKR0594	5/16	0.063	0.63	0.25	1.69	2.25
TKR0598	3/8	0.188	0.75	0.31	1.88	2.5
TKR0596	1/2	0.375	1	0.38	2.44	3.25
TKR0597	5/8	0.855	1.25	0.5	3	4

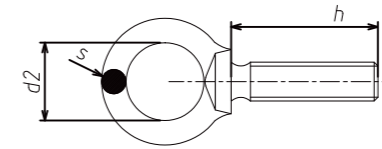


### 7. US Type G277 Screw Bolt

Process: Forging  
Material: Carbon Steel  
Surface: Hot Dip Galvanized or Zinc Plating



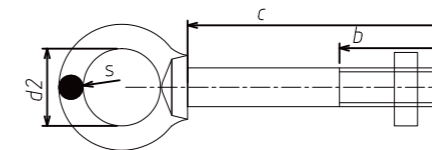
Part No	Size (in.)	W.L.L (lbs.)	Weight (lbs.)	Dimensions (in.)			
				d2	s	b	c
TKR0598	1/4	640	0.066	0.5	0.19	1.5	2.94
TKR0599	1/4	640	0.091	0.5	0.19	2.5	4.94
TKR0600	5/16	1200	0.125	0.62	0.25	1.5	3.5
TKR0601	5/16	1200	0.188	0.62	0.25	2.5	5.5
TKR0602	3/8	1500	0.214	0.75	0.31	1.5	3.97
TKR0603	3/8	1500	0.254	0.75	0.31	2.5	5.97
TKR0604	1/2	2600	0.425	1	0.38	1.5	5.12
TKR0605	1/2	2600	0.569	1	0.38	3	7.88
TKR0606	5/8	5200	0.686	1.25	0.5	2	6.44
TKR0607	5/8	5200	1.003	1.25	0.5	3	8.44
TKR0608	3/4	7200	1.455	1.5	0.62	2	7.44
TKR0609	3/4	7200	1.675	1.5	0.62	3	8.94
TKR0610	7/8	10500	2.248	1.75	0.75	3	9.97
TKR0611	1	13300	4.233	2	0.88	4	13
TKR0612	1-1/4	21000	6.504	2.5	1	4	12.7
TKR0613	1-1/4	21000	7.959	2.5	1	4	16.7
TKR0614	1-1/2	23800	14.250	3	1.25	6	20.8



### 8. US Type S279 Eye Screw Bolt

Process: Forging  
Material: Carbon Steel  
Surface: Hot Dip Galvanized or Zinc Plating

Part No	Size (in.)	W.L.L (lbs.)	Weight (kg)	Dimensions (in)		
				h	d2	s
TKR0615	1/4	650	0.02	1.02	0.75	0.19
TKR0616	5/16	1200	0.04	1.15	0.88	0.25
TKR0617	3/8	1550	0.06	1.27	1	0.31
TKR0618	1/2	2600	0.12	1.53	1.19	0.38
TKR0619	5/8	5200	0.24	1.79	1.38	0.5
TKR0620	3/4	7200	0.43	2.05	1.5	0.62
TKR0621	7/8	10600	0.7	2.3	1.75	0.75
TKR0622	1x2	13300	1.1	2.58	2	0.88
TKR0623	1-1/8	15000	1.5	2.75	2.25	0.97
TKR0624	1-1/4	21000	1.8	3.09	2.5	1
TKR0625	1-1/2	24000	3.2	3.6	3	1.25
TKR0626	1-6/8	34000	4.7	3.75	3.5	1.38
TKR0627	2	42000	8.6	4.02	4	1.8
TKR0628	2-1/2	65000	14.5	5	4.5	2.12



### 9. G291 US Type Eye Screw Bolt

Process: Forging  
Material: Carbon Steel  
Surface: Hot Dip Galvanized or Zinc Plating

Part No	Size (in.)	W.L.L (lbs.)	Weight	Dimensions (in)			
				d2	s	b	c
TKR0629	3/8	1550	0.295	0.75	0.38	2.5	4.5
TKR0630	1/2	2600	0.503	1	0.5	1.5	3.25
TKR0631	1/2	2600	0.661	1	0.5	3	6
TKR0632	1/2	2600	0.82	1	0.5	3	8
TKR0633	1/2	2600	0.88	1	0.5	3	10
TKR0634	1/2	2600	1.142	1	0.5	3	12
TKR0635	5/8	5200	1.031	1.25	0.62	2	4
TKR0636	5/8	5200	1.182	1.25	0.62	3	6
TKR0637	5/8	5200	1.351	1.25	0.62	3	8
TKR0638	5/8x	5200	1.536	1.25	0.62	3	10
TKR0639	5/8x	5200	1.671	1.25	0.62	4	12
TKR0640	3/4	7200	1.686	1.5	0.75	2	4.5
TKR0641	3/4	7200	1.845	1.5	0.75	3	6
TKR0642	3/4	7200	2.079	1.5	0.75	3	8
TKR0643	3/4	7200	2.35	1.5	0.75	3	10
TKR0644	3/4	7200	2.575	1.5	0.75	4	12
TKR0645	3/4	7200	2.98	1.5	0.75	5	15
TKR0646	7/8	10600	2.7	1.75	0.88	2.5	5
TKR0647	7/8	10600	3.08	1.75	0.88	4	8
TKR0648	7/8	10600	4	1.75	0.88	4	12
TKR0649	1	13300	4.21	2	1	3	6
TKR0650	1	13300	4.685	2	1	4	9
TKR0651	1	13300	5.4	2	1	4	12
TKR0652	1	13300	6.5	2	1	7	18
TKR0653	1-1/4	21000	7.5	2.5	1.25	4	8
TKR0654	1-1/4	21000	9	2.5	1.25	4	12
TKR0655	1-1/4	21000	12.1	2.5	1.25	6	20

# Eye Bolt

## Eye Bolt

### 10. Scaffolding Eye Bolt

Part No.	Size(mm)	Dimensions(mm)	
		A	B
TKR0688	12	90	23
TKR0689		120	
TKR0690		160	
TKR0691		190	
TKR0692		230	
TKR0693		300	
TKR0694		350	
TKR0695		140	50
TKR0696		160	
TKR0697		200	
TKR0698		250	
TKR0699		300	